



**Pretoria**  
**SKYDIVING CLUB**



[www.iloveskydiving.co.za](http://www.iloveskydiving.co.za) 081 466 5739

**BULLETIN 1: PASA 2016 NATIONAL  
SKYDIVING CHAMPIONSHIPS  
IN**

**ARTISTIC EVENTS (AE)**

**ACCURACY LANDING**

**CANOPY FORMATION**

**CANOPY PILOTING**

**FORMATION SKYDIVING (FS)**

**AND WINGSUITING**

Training: 27 April 2016

Competition: 28, 29, 30 April, 1<sup>st</sup> and 2<sup>nd</sup> May 2016

Awards Ceremony: 2nd May 2016

## ORGANISER DETAILS

Meet Director: Peter Lawson  
[greatfun@mweb.co.za](mailto:greatfun@mweb.co.za)  
073 897 4246 / 012 5663744

PSC Nationals Committee  
Admin Officer: Hettie Blignaut  
[greatfun@mweb.co.za](mailto:greatfun@mweb.co.za)  
0814995739 / 012 5663744

## OPERATIONS STAFF

Meet Director: Peter Lawson

Safety Officer: Mike Teague

CP Course Director: Mike Teague

Manifest Officer: PSC TBA

Medical Services: The required paramedics and vehicle will be in attendance throughout the competition as determined by the SSA. Wonderboom Airport Fire and Rescue Services is available from 05h00 to 20h00, 7 days a week.

Cleaning and Maintenance staff will be in attendance throughout the competition.

## JUDGING STAFF

### JUDGES

The Chief Judge will be appointed by the organiser and the PASA Judges Committee and judging staff confirmed after Nationals has been awarded.

The training judges will be responsible for their own accommodation and transport.

Judges will be using our editing room to perform judging duties.

Downloading will take place in the adjacent office. Equipment will be provided according to the FAI Rules and the printing and admin costs will be covered.

### JURY AND VIDEO PANEL REVIEW

These positions will be filled one calendar month before the competition starts and will comprise of appropriately experienced skydivers.

## AIRCRAFT OPERATIONS AND GROUND CREW

### AIRCRAFT

Pretoria Skydiving club will be utilizing the 12 seater Aircraft PAC 750. Pretoria Skydiving Club will appoint an aircraft coordinator one calendar month after the bid has been accepted. There will be

duty and standby pilots for each day's operation and Pilots will be available to fly from 08:30 to 17:30 as required.

A loadmaster will be designated on each load to organize seating, door opening and exit order.

Radio Operators will be appointed before the event. The aircraft and ground crew will have working radios for communication between manifest/judges and pilots. PSC re-fueling staff will be used to refuel the aircraft.

## COSTS TO COMPETITORS

### REGISTRATION FEE

Registration will be R1 000.00 per person competing, regardless of the number of events entered. This may include a basic welcome pack if one can be arranged and the Nationals Awards Ceremony and closing braai which will take place on the premises.

SSA membership is a requirement for participation in the National Championships. Participants not complying with this requirement will be disqualified.

Close of Registration: 22<sup>nd</sup> of April 2016

Late Registration: Will be accepted until noon on 26 April 2016 at a cost of R1 500.00 per person.

### JUMP RATES AND ALTITUDE

The slot rate for the competition will be R290.00 per jump to 12 000ft AGL or below.

All camera slots will be at R200.00 per slot.

Note : All jump altitudes are subject to ATC requirements/direction as is the norm at Pretoria Skydiving Club.

- Jump Altitudes for all disciplines will be in accordance with altitudes obtainable per ATC requirement as is the norm at Pretoria Skydiving club and where possible as per FAA regulations. This altitude may be adjusted at the meet directors' discretion for meteorological, safety and / or operational considerations as well as at the possible instruction of ATC.
- Teams will be accommodated as per meet director.
- Note that the jump rate as listed above is in line with the anticipated increase in the fuel price and unfavourable exchange rates by the event date – however, we reserve the right to revise these rates in line with any discrepancies in recovery. This will be communicated with the SSA.

The one training day will be strictly on a pre-manifest basis with a slot rate of R290.00.

## RE-JUMPS

Re-jumps awarded in accordance with the rules will be for the account of the competitor. Re-jumps due to judging equipment failure or event organisation faults are for the account of the organiser..

All re-jumps, practice rounds and judged practice rounds related to the competition will be for the competitors account.

## PUBLIC RELATIONS AND MEDIA LIAISON

### PUBLIC RELATIONS STAFF AND ADVANCE PUBLICITY

A public relations officer and team will be appointed prior to the event to liaise with the media and with other drop zones during and after the event. They will action all points covered in the bid document.

News bulletins will be distributed to all list serves and drop zones to inform participants of the preparation progress and other relevant information.

### MEDIA RELEASES AND LOCAL TOWN PRESS

Various in-depth articles will be supplied to the local media to encourage spectators to come and join in the fun.

### TOURISM & LOCAL BUSINESS INVOLVEMENT

Pretoria Skydiving Club will make arrangements with local backpackers and B&B's in order to interest local business owners in the event.

## CONDUCTING THE COMPETITION

### THE VENUE

The venue for the event will be Pretoria Skydiving Club (PSC). Pretoria Skydiving Club is a very experienced, busy weekend drop zone. It will operate from 08h00 to 17h00 during the Championships. The club currently has a reliable and competent operational staff with a strong member support base.

### TRANSPORTATION ON THE DZ

Transportation on the DZ will be provided to judges and staff where necessary.

Transportation will be provided for collection of competitors from out landings if necessary. Transport will be provided to boarding point. Shaded areas at boarding point are not necessary as PSC runs at a busy airport and jumpers do not wait for any length of time at boarding point. When boarding is after a refuel, hangars provide shade for jumpers.

## TEAM FACILITIES

The club grounds will be used as a packing area. There is also ample shade under trees for packing and team areas as well as a marquee.

## ACCOMMODATION & ABLUTION FACILITIES

Free camping is permitted on the club grounds. A list of recommended accommodation facilities (bed and breakfasts and guest houses) will be provided. There are 6 permanent toilets plus a urinal and 8 permanent showers at PSC.

## BRIEFINGS

All briefings will take place on the first day of competition and as and when required. Relevant staff will have a working knowledge of the FAI Sporting Code.

## MANIFEST

The following manifest calls will be given to competitors:

- 30 minutes
- 15 minutes (walk out to transportation point).

Competitors will be expected to walk out to transportation point when the previous load has taken off (approximately 15 minutes before take-off).

## LOAD MANAGEMENT

Load management will be undertaken by the Manifest Officer.

## COMPETITION BULLETINS

Bulletins will be released as per the SSA requirements, daily bulletins will be produced and disseminated as necessary and Notice boards will be available in the canteen area.

## ENTERTAINMENT

Competitors can make their own entertainment most evenings. There will be music and braaiing on the drop zone. There are several excellent restaurants in the area.

## NATIONAL AWARDS CEREMONY

The medals presentation will be held on premises of Pretoria Skydiving Club after the close of jumping for the day the 2<sup>nd</sup> of May 2016. If events are completed earlier, the awards and braai may be moved and competitors will be informed of this. The area is large enough to accommodate competitors, friends and families. There will be a catered braai for competitors. Additional tickets will be for sale for guests and non-competitors.

## EVENTS

An event timetable will be issued after the close of registration.

### NOTES:

#### FS 8 WAY AND AE:

We can only offer 12 000ft AGL – that is 16 000ft ASL. We are in OR Tambo International Airport airspace and cannot get higher altitude.

#### Wingsuiting :

We will only host this event if there is an acceptable judging system used where no competitor does the downloading or “judging”. There are websites available where one can get instant “FAI” / IPC results.

#### All other events :

All “IPC” FS 4 and 8 Way, AE, CP and Wingsuiting events will be completed before “crossover” events (teams) will take place. Teams that do not have members in these events will jump asap.

#### The Aircraft :

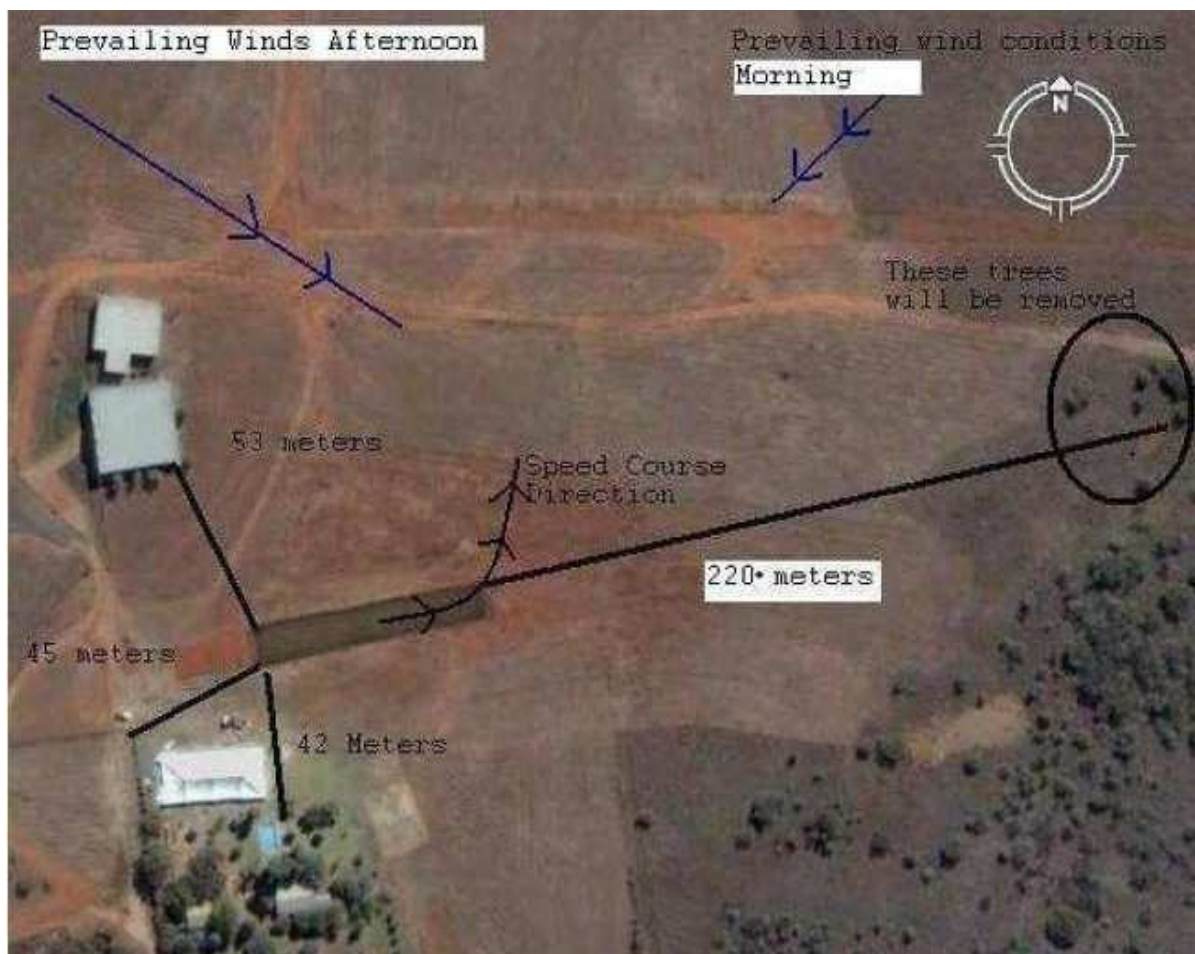
- Maximum of 2 x 4 way teams per load.
- Maximum of 4 x 2 way teams per load.
- Maximum of 1 x 8 way team per load.
- AE – maximum of 3 teams per load.

<b>Competition Rounds for Nationals.</b>										
		Rounds		Slots		Cost	Slot Rate	R 290,00	Camera Rate	R 200.00
<b>Formation Skydiving</b>										
Open	4 Way	10		5		R13 600.00		11000 ft		
Intermediate	4 Way	6		5		R8 160.00		11000 ft		
Novice	4 Way	6		5		R8 160.00		11000 ft		
Open	2 Way	6		3		R4 680.00		11000 ft		
Novice	2 Way	6		3		R4 680.00		11000 ft		
Open	8 Way	10		9		R25 200.00		12000 ft		
<b>Speed Star</b>	10 Way	3		11		R9 300.00		11000 ft		
<b>Artistic Events</b>										
Freely Open	2 Way	7		3		R5 460.00		12000 ft		
Freely Intermediate	2 Way	7		3		R5 460.00		12000 ft		
Freestyle	1+1	7		2		R3 430.00		12000 ft		
<b>Canopy Piloting</b>										
Open	Individual	9		1		R2 610.00		6000 ft		
Intermediate	Individual	6		1		R1 740.00		6000 ft		
<b>Canopy Formation Skydiving</b>										
Sequential	2 Way	8		3		R6 240.00		7000 ft		
Sequential	4 Way	8		5		R10 880.00		9000 ft		
Rotation	4 Way	8		5		R10 880.00		8000 ft		
<b>Accuracy Landing</b>										
Open	Individual	10		1		R2 900.00		3500 ft		
Junior	Individual	10		1		R2 900.00		3500 ft		
<b>Wingsuit</b>										
Acrobatic	2 Way	7		3		R5 460.00		11000 ft		
Performance	Individual	9		1		R2 610.00		12000 ft		

## EVULATION REPORT

An Evaluation report will be completed and submitted to the SSA Committee as required in the SSA Nationals Regulations.

## CP COURSE



Drop Zone Elevation: 4060 ft ASL

Speed Course: 75° carving west to north east, 10m wide, 70m length, down centreline. No straight line through course.

Distance Course: 10m wide. Adequate length to SSA CP requirements.

Zone Accuracy Course: Over water, 10m wide, water gates occupy 36m. Distance from last water gate to shoreline is 8m and from shoreline to start of Zone 1 is 5m.

Pond: 15m wide, 90m long and 1m deep. There is no significant bank or gradient at either end of the pond and the area is free of hazards. Sand is used as a landing substrate for Zone Accuracy. Public viewing is available within 30m of the pond and off normal drop zone landing and club facilities. The pond is used throughout the year as a training facility for South Africa's top canopy pilots and available for all to train for the event.



## REGISTRATION

Each competitor to complete one form on the "competitor" registration link and each competitor makes one payment. Payments not to be combined with any other payment.

> <https://www.smartwaiver.com/v/competitor/>

Each team to complete one form on the "team" registration link for the entire team or as individual per event and one payment per team / individual per event. Payments not to be combined with any other payment.

> <https://www.smartwaiver.com/v/team/>